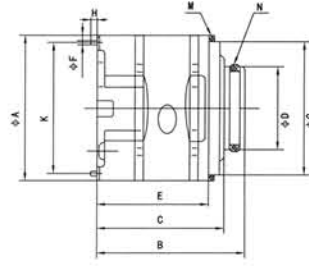


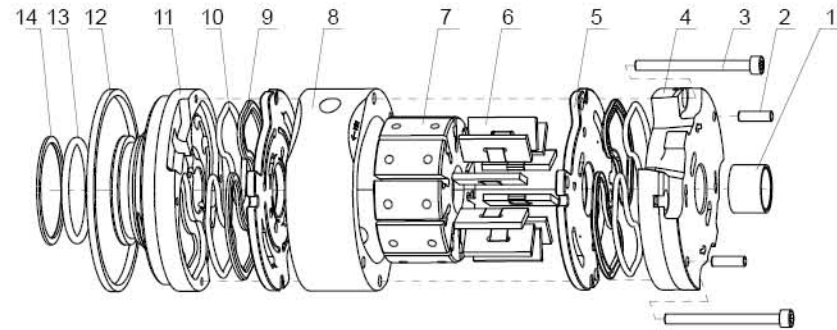
# VQ 系列泵芯 Series-cartridge



## 型号说明/Model Designation

(F3-)	PC-	25VQ	19	R	10
前注 Note	泵芯标记 Cartridge mark	系列号 Series	▲排量代号 Displacement	旋转方向 Rotation	设计号 Design number
无标记 No-marking: 石油系油 Petroleum series oil 乳化液 emulsification fluid 水-乙二醇 water glycol-fluid F3: 磷酸酯液 phosphate ester fluid	PC-单泵泵芯、双联泵轴端泵芯 Cartridge kit of single pump double pump shaft end PCT-双联泵盖端泵芯 Cartridge kit of double pump cover end	20VQ 25VQ 35VQ 45VQ	2, 3, 4, 5, 6, 7, 8, 9, 10, 11, 12, 14 10, 12, 14, 15, 17, 19, 21, 25 21, 25, 30, 32, 35, 38, 45 42, 45, 50, 57, 60, 66, 75	(从泵的轴端看) (Viewed from shaft end of pump) R-顺时针旋转 right hand for clockwise L-逆时针旋转 left hand for counter-clockwise	10

▲ 在1200r/min和0.69MPa(100psi)下的额定排量;与相应系列、规格的油泵性能参数一致,详见VQ系列单泵的性能参数。  
USgpm Flow(USgpm) at 1200r/min and 0.69MPa.  
The data of relevant series, model are unanimous. Please see VQ series-single pumps data.



序号NO.	名称Part	数量Qty	序号NO.	名称Part	数量Qty	序号NO.	名称Part	数量Qty
1	滑动轴承 Sliding bearing	1	6	叶片 vane kit	10	11	压力侧板 outlet support plate	1
2	销 Pin	2	7	转子 Rotor	1	12	挡圈 Retainer	1
3	内六角圆柱头螺钉 Hexagon socket head cap screws	2	8	定子 cam ring	1	13	O型圈 O shape retainer	1
4	侧板 inlet support plate	1	9	异形挡圈 irregular shape retainer	4	14	挡圈 Retainer	1
5	配油盘 valve plate	2	10	O型圈 O shape retainer	4			

## 技术规格/Specifications

系列号 Series	ΦA	B	C	ΦD	E	ΦF	ΦG	H	K	M(挡圈Gasket)	N(O形圈O-Ring)
20VQ	82.55	81.5	70.1	47.2	61.5	4.8	76.2	7	73.8	82.76×76.26×3.5	40×3.55
25VQ	96.8	98.8	87	52.2	71.2	4.8	90.5	7	88.19	97×91×3.5	44×3.53
35VQ	114.3	117.7	105	72.2	90.3	6.4	108	7	103.94	114.5×108.5×3.5	63.09×3.53
45VQ	133.35	141.1	129.6	80.2	105.5	6.4	127	11	123.8	133.6×127.6×3.5	71×3.55

系列号 Series	转子内花键齿廓参数 Inside spline tooth outline parameter of rotor				
	齿数 Number of teeth	径节 Pitch	压力角 Pressure angle	大径 Major diameter	小径 Minor diameter
20VQ	30	48/96	45°	16.617	15.56
25VQ	40	48/96	45°	21.9	20.86
35VQ	37	40/80	45°	24.38	23.10
45VQ	14	12/24	30°	32.59	27.6

# 2520VQSV10S 三联泵 Series-treble Pumps

## 型号说明/Model Designation

(F3-)	2520VQSV10S	-21	A	7	-P	7	-86	C	B	C	-20	R
前注 Note	系列号 Series	轴端泵排量 代号 Flow-shaft end code	双泵油口连接 Double pump port connection	中间泵排量 代号 Flow-mid code	盖端泵油口连接 Flow-cover end pump port connction	盖端泵排量 代号 Flow- cover end code	轴伸形式 Shaft type	第一出 油口位 置 No.1 Outlet positions	第二出 油口位 置 No.2 Outlet positions	第三出 油口位 置 No.3 Outlet positions	设计号 Design number	旋转方向 Rotation
无标记 No-marking: 石油系油 Petroleum series oil 乳化液 emulsification fluid 水-乙二醇 water glycol- fluid F3: 磷酸酯液 phosphate ester fluid	2520VQSV10S	10, 12, 14, 15, 17, 19, 21, 25	A- SAE 4螺栓法兰 A-SAE 4-bolt flange	2, 3, 4, 5, 6, 7, 8, 9, 10, 11, 12, 14	1/2"NPT-14	1, 2, 3, 4, 5, 6, 7	-86 轴 Shaft	见下表 see below	见下表 see below	见下表 see below	-20	(从泵的轴端看) (Viewed from shaft end of pump) R-顺时针旋转 right hand for clockwise L-逆时针旋转 left hand for counter- clockwise

## 出油口位置代号/Outlet oil port position code

从盖端观察的位置/Views from cover end of pump	No.1 出油口/No.1 Outlet	No.2 出油口/No.2 Outlet	No.3 出油口/No.3 Outlet
在进油口对侧 Oppsite of the inlet oil port	A	-	A
从进油口逆时针135° CCW from the inlet oil port	-	A	-
从进油口逆时针90° CCW from the inlet oil port	B	-	B
从进油口逆时针45° CCW from the inlet oil port	-	B	-
在进油口同侧 Same side of the inlet oil port	C	-	C
从进油口顺时针45° CW from the inlet oil port	-	C	-
从进油口顺时针90° CW from the inlet oil port	D	-	D
从进油口顺时针135° CW from the inlet oil port	-	D	-

## 2520VQSV10S安装连接尺寸/Installation Dimensions

